

AutoRuns

AUTORUN gives you a list of the processes that are running on your computer to help you choose which ones you can turn off (uncheck) safely. IF after reading the info AutoRun gives you about the running item, you still are not sure what it does, rightclick the item and click Google on the drop down list. Google will take you to a site that explains what that particular items does.

To learn more about this nifty program, and to download it free click here: [Click here: Sysinternals Freeware - Autoruns](#)

Create a subfolder and name it AutoRuns in your C:\Programs folder. During the download process, click SAVE instead of RUN and locate the AutoRuns folder. Click SAVE. The zipped file will be downloaded to your AutoRuns folder.

Rightclick Start, click Explore and scroll down the left column to locate the C:\Programs folder. Click the + beside Programs and you will see the Autoruns subfolder. Doubleclick the Autoruns folder. Then click to unzip and extract the autoruns files to the same Autoruns folder. Click the file with the ? to read about Autoruns. Then click the Autoruns file to bring up the list of your running programs. Uncheck those that you do not need to have running..when you restart your computer and something isn't working, you can go back and check that item again.

Its a great tool for finding spyware and manually shutting it off.

It is a good idea to create a New Restore Point before using Autoruns.
Click Start...All Programs...Accessories...System Information...System Restore.
Place the dot in Create Restore Point and click Next. Name it Before Autoruns. The date will be automatically entered.

Updated 6/13/2006 JMM

Auto Runs from Microsoft TECHNET [Click here: AutoRuns for Windows](#)

AutoRuns for Windows v9.21

By Mark Russinovich and Bryce Cogswell

Published: May 13, 2008

Introduction

This utility, which has the most comprehensive knowledge of auto-starting locations of any startup monitor, shows you what programs are configured to run during system bootup or login, and shows you the entries in the order Windows processes them. These programs include ones in your startup folder, Run, RunOnce, and other Registry keys. You can configure *Autoruns* to show other locations, including Explorer shell extensions, toolbars, browser helper objects, Winlogon

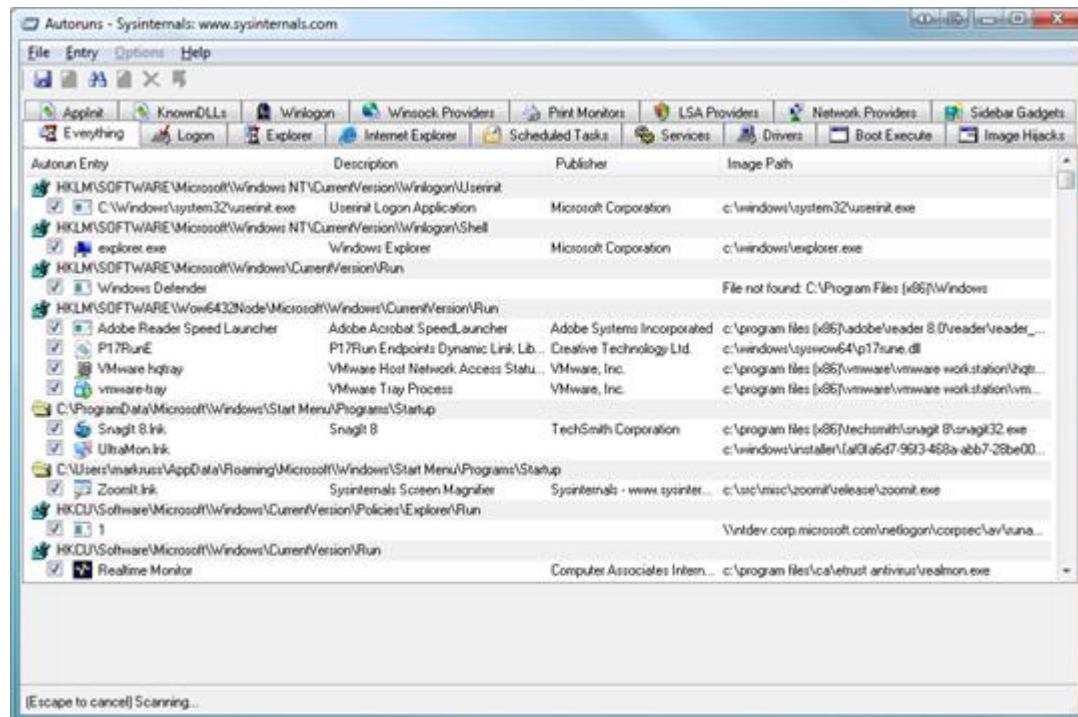
notifications, auto-start services, and much more. *Autoruns* goes way beyond the MSConfig utility bundled with Windows Me and XP.

Autoruns' **Hide Signed Microsoft Entries** option helps you to zoom in on third-party auto-starting images that have been added to your system and it has support for looking at the auto-starting images configured for other accounts configured on a system. Also included in the download package is a command-line equivalent that can output in CSV format, *Autorunsc*.

You'll probably be surprised at how many executables are launched automatically!

Autoruns works on all versions of Windows including 64-bit versions.

Screenshot



Usage

See the November 2004 issue of *Windows IT Pro Magazine* for Mark's [article](#) that covers advanced usage of *Autoruns*. If you have questions or problems, visit the [Sysinternals Autoruns Forum](#).

Simply run *Autoruns* and it shows you the currently configured auto-start applications as well as the full list of Registry and file system locations available for auto-start configuration. Autostart locations

displayed by Autoruns include logon entries, Explorer add-ons, Internet Explorer add-ons including Browser Helper Objects (BHOs), Appinit DLLs, image hijacks, boot execute images, Winlogon notification DLLs, Windows Services and Winsock Layered Service Providers. Switch tabs to view autostarts from different categories.

To view the properties of an executable configured to run automatically, select it and use the **Properties** menu item or toolbar button. If [Process Explorer](#) is running and there is an active process executing the selected executable then the **Process Explorer** menu item in the **Entry** menu will open the process properties dialog box for the process executing the selected image.

Navigate to the Registry or file system location displayed or the configuration of an auto-start item by selecting the item and using the **Jump** menu item or toolbar button.

To disable an auto-start entry uncheck its check box. To delete an auto-start configuration entry use the **Delete** menu item or toolbar button.

Select entries in the **User** menu to view auto-starting images for different user accounts.

More information on display options and additional information is available in the on-line help.

Autorunsc Usage

Autorunsc is the command-line version of Autoruns. Its usage syntax is:

Usage: autorunsc [-a] | [-c] [-b] [-d] [-e] [-g] [-h] [-i] [-l] [-m] [-n] [-p] [-r] [-s] [-v] [-w] [-x] [user]

- a** Show all entries.
- b** Boot execute.
- c** Print output as CSV.
- d** Appinit DLLs.
- e** Explorer addons.
- g** Sidebar gadgets (Vista and higher).
- h** Image hijacks.
- i** Internet Explorer addons.
- l** Logon startups (this is the default).
- m** Hide signed Microsoft entries.

- n** Winsock protocol and network providers.
 - p** Printer monitor drivers.
 - r** LSA providers.
 - s** Autostart services and non-disabled drivers.
 - t** Scheduled tasks.
 - v** Verify digital signatures.
 - w** Winlogon entries.
 - x** Print output as XML.
- user** Specifies the name of the user account for which autorun items will be shown.

WHAT IS? Self-Help using www. Google.com

What are some of those items listed in the XP STARTUP box of msconfig? Here are just a few. I opened www.google.com entered the name in the google search box and added What Is? In each case a What Is? link was given. I selected the best description. You can check all those items listed in your msconfig StartUP box this way. This allows you a better idea of what you should leave checked and what can be unchecked without adversely affecting the operation of your computer Jmax

Regguard.exe is a process from HP that prevents a user from deleting or corrupting the WinXP Recovery Partition on some computers.

Igfxtray.exe - Intel Integrated Display Adapter component -- System Tray Applet facilitating display adjustments

Jusched.exe - It's Sun Java's automatic update scheduler. It periodically starts another process that check for updates for the Jav VM.

Hkcmd.exe - Intel "extreme" graphics hot key interceptor. If you never use the Intel hotkeys, you can save the overhead via Control Panel/Intel Extreme Graphics/Hot Keys and turn them off.

To learn more download Autoruns, a free program. Doubleclick it's zipped file, then doubleclick the Autoruns file which will list the Processes running in your computer. Click on a particular item and autoruns will tell you what it does so you'll know if you can remove it or not.

Revised 7/16/2006 JMM

For more info re Autoruns and what it can do for you, download the Troubleshooting Tools and Tips Presentation by Bob Petrilak on our VCC web site.

www.thevillagescomputerclub.com

Feel free to download and view and use any other presentations listed.

